



TRAINING NOTES

DIVISION OF TRAINING

Emergency Apparatus Accident | Safe Driving Practices

When/Where:

Oakland Fire Department
Oakland, California

Kansas City Fire Department
Kansas City, Missouri

San Francisco Fire Department
San Francisco, California

What:

Fire apparatus involved accidents
while driving code three to
incidents.

Resources:

ABC 7 News:
Video OFD Collision



IAFF Emergency
Vehicle Safety Guide



IAFF Emergency
Vehicle Accidents
Case Studies



SFFD Manual:
Vehicle Operations
Section 3
Section 5

Emergency Apparatus Accidents

A large part of our job that often gets over looked is the importance of safe driver practices while operating emergency rigs. According to the NFPA in 2020, 15 firefighters died in vehicle related accidents, this accounted for approximately 29% of the total annual deaths (excluding COVID related deaths.). Many of these fatal accidents were due to excessive speed and unfavorable weather conditions.

Summarized below are a few case studies involving fire apparatus responding code three to incidents. While reviewing these types of accidents it is important not to assign blame to those involved. These unfortunate events should serve as a reminder to always be diligent while driving and encourage us to review our own safe driving operations.

Oakland, CA

Around 12:40 pm on February 26, 2022, OFD Truck 4 responded to a reported working fire. While en-route to the reported fire, Truck 4 attempted to proceed through the intersection of Grand Ave and Perkins following behind another responding rig, however was impeded by a car crossing in front of their apparatus. In attempts to avoid colliding with the vehicle, Truck 4 redirected and crashed into a building. Three of the firefighters on board sustained moderate injuries and were transported to the local hospital. No civilians were injured in the crash.

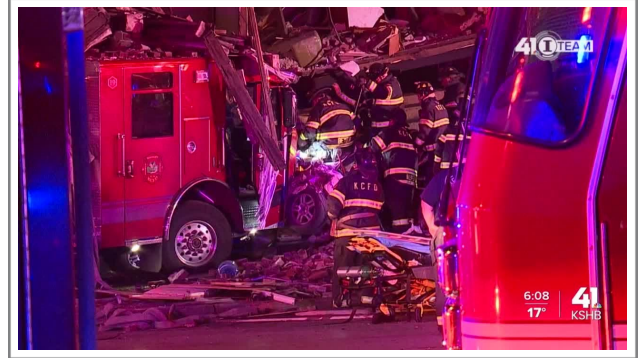


Tactical Considerations:

- The key to rapid response is getting out of the station in a timely manner, not driving at excessive speeds.
- **Basic Speed Rule:** never exceed a speed which is reasonable and proper for the existing conditions even when the law permits a speed faster than you are driving.
- **Don't use Auxiliary Braking Systems (retarder or Jake brakes) when streets are wet**
- **Confirm clear intersections even when following another responding unit**
- **Whenever driving on city streets, the maximum speed for all Fire Department vehicles and apparatus is 35 mph.**
- **Emergency vehicles, responding with red lights and siren, shall come to a complete stop at all stop signs, red lights, and arterial controlled intersections.**
- **Whenever crossing against a red light, the maximum speed for all Fire Department vehicles and apparatus responding to an emergency (lights and sirens) call is 15 MPH.**

Kansas City, MO

At approximately 10:20 pm on December 20, 2021, Kansas City Pumper 19 was among several other apparatus responding to a reported structure fire. While enroute, Kansas City Pumper 18 notified dispatch via radio that they were available and close to the reported structure fire and requested to be attached to the response. Dispatch then placed Pumper 18 on the call and notified Pumper 19 to "stand down and remain in quarters." One minute later, Pumper 19 notified dispatch they were involved in a traffic accident involving another vehicle. Pumper 19 and a civilian SUV collided and the force of the crash caused both vehicles to slam into an adjacent brick building. None of the firefighters on board were injured, both occupants of the car were killed as well as one pedestrian found under the partially collapsed building.



San Francisco, CA

At approximately 5:30 pm on June 28, 1995, Engine 24 and Engine 11 were responding to a box at 23rd Street and Treat Ave. One of the engines was responding from the firehouse while one



was responding from the location of another call. While enroute, Engine 24 and Engine 11 were involved in a collision at the intersection of Valencia and 23rd Street, just seven blocks away from the reported fire. The crash sent one engine through the wall of the popular Radio Valencia Cafe. Eight firefighters were moderately injured and released from the hospital. Radio Valencia Cafe suffered severe structural damage. One patron within the cafe sustained only minor injuries.

- It is the drivers responsibility to exercise safe driving practices, it is the officers job to enforce safety standards.
- Headsets limit surrounding audio, be hyper aware of oncoming rigs approaching intersections.
- There are many new officers in the field moving personnel into positions they don't usually fill. Become familiar with members abilities to fulfill those functions and set performance expectations early in the watch
- Always be aware of other responding apparatus and to follow regular response route to provide predicability.
- Pay particular attention when responding from a location other than quarters

San Francisco, CA

On March 18th, 2022 at 1155 hours, BOX 3251 was struck at 1803 Broadway between Gough and Octavia. The following units were dispatched at 1157 hours; E38, E41, E16, T03, T16, B04, B01, D2, RS2 and KM111. At the time of dispatch, Engine 38 was shopping at Marina Safeway and Engine 16 had just gotten back from a surf rescue drill a couple minutes prior and were responding from Station 16. While enroute from their respective locations, Engine 16, heading east on Greenwich, and Engine 38, heading south on Laguna, met at the intersection of Greenwich and Laguna and collided. The impact took place between Engine 38's front bumper and Engine 16's driver side rear dual tires. The crash caused Engine 16's back tires to be lifted off the ground and swing out and into two unoccupied parked cars before coming to a rest at approximately 100' past the intersection. Engine 16 sustained major damage which included the loss of a rear wheel and considerable structural body damage on the driver side due to the impact with Engine 38 and officer side due to the impact with the parked cars. Engine 16 was unable to be driven following the accident and had to be towed. Engine 38 sustained the majority of the damage to its officer side bumper. On impact, Engine 38 lost both driver and officer windshields and the force of the impact ripped off the bell and caused it to become lodged in Engine 16's body. Engine 38 was able to be driven away following the accident. All occupants of both Engine 38 and Engine 16 walked away with minor injuries, no civilians were hurt.

